

PRODUCT CATALOGUE



CONSTRUCTION MATERIALS





AGI-Augusto Guimarães & Irmão, Lda. has been part of the Portuguese market since 1915 and of the Spanish market since 2009. Over the past 105 years, the company has been able to keep up with technological developments, has gained its partners' trust, becoming a major supplier of raw materials and equipment to the plastics industry.

AGI started its activity in the construction sector with the distribution of LEXAN™, cellular and compact polycarbonate sheets from SABIC Innovative Plastics, in the early 1990s. In 2004, the company incorporated phenolic compacts for facade cladding into its product range, having carried out the main reference building works in Portugal and Spain from then until today. In 2016, it finalized an agreement with FUNDERMAX and was named new distributor for Portugal of Max Exterior products.

Also in our portfolio since 2016, ALBOND composite panels for ventilated facades. As a complement and for indoor building works, AGI also distributes the entire range of thermolaminates and compacts of Arpa Industriale, FENIX NTM® nanotechnological material.

Contents

Page



We ensure competitiveness

04



Ventilated facades

10



Aluminium composite

14



Ventilated facades in polymer concrete

18



Indoor claddings

20



HPL nanotechnology

24



Translucent facades and coverings

28



Translucent facades and coverings

31



Translucent facades and coverings

32



Custom facades and coverings

34



105 YEARS OF INNOVATION



Since the first half of the 20th century, AGI has been a pioneer in what later became a new industrial sector, importing the first thermoplastic injection machines into Portugal.



Identifying itself with a strong vocation for technical plastics, in the 80s, AGI is appointed as exclusive distributor for General Electric Plastics, a relationship that is currently maintained with SABIC.



Forerunner in both electrical cable and telecommunications industries in the 1970s.



In the early 1990s, AGI is one of the first companies in its sector to design and install centralized production systems and subsequently to add robotics solutions to its offering.



In 1990, AGI begins distributing Lexan polycarbonate sheets, a relationship that has been going on for almost 30 years, and which is the origin of the construction material department.



In 2002, AGI expands its activity with an Iberian vision after its alliance with the Guzman Global group.



In 1995, it becomes the first service company in Portugal to obtain an ISO9001 certification.



Performing the first MES installation (Manufacturing Execution System), the company anticipates itself to the industry 4.0 era.



Sells the first injection machine with artificial intelligence, thanks to the two decades of experience in this sector.



Aware of the economic and environmental importance, AGI has been promoting the incorporation of recycling systems since the 1970s, becoming in 2019 the first polymer distribution company in Portugal to obtain ISCC PLUS certification.



First polymer distribution company in Portugal to sell 3D printing equipment and filaments.



AGI - Augusto Guimarães & Irmão, Lda becomes part of the Hromatka Group, one of the main distribution groups in the polymer market and highly qualified local specialists. The Hromatka Group, with a presence in 16 European countries, has 3 laboratories, 2 compounding plants, 20 extrusion lines, 100 commercials and more than 8,000 customers. Maintaining a local network, allows AGI to have an even closer relationship with the producers of raw materials, highlighting the geographical coverage in which the Hromatka Group has a presence.



Productivity and process stability are quickly identified as critical, leading to the incorporation of peripheral equipment, such as cooling units and temperature controllers in the mid-1960s.



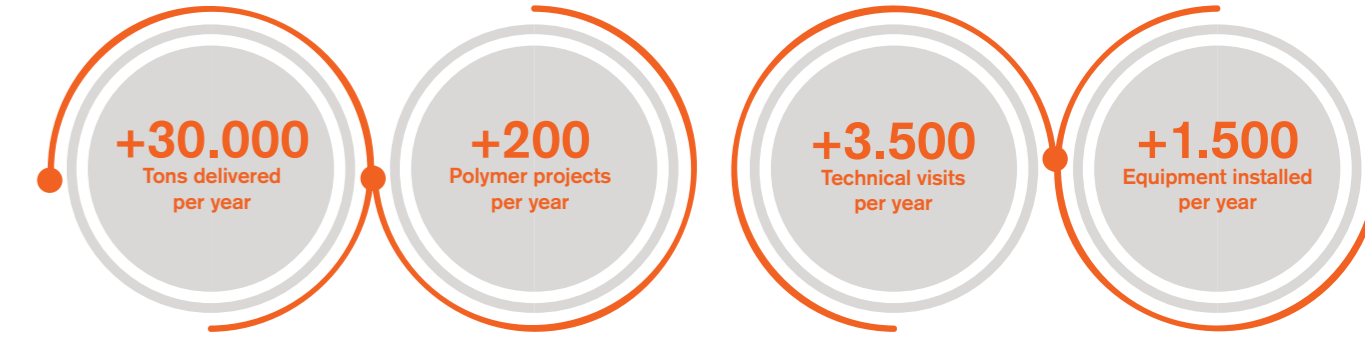
Tell us what you want and AGI, hand in hand with our leading suppliers in the industry, will provide you with the equipment and materials necessary for the success of your project.

You can count on us. We ensure competitiveness.

Raw Materials and Equipment

Distributor of the main brands of plastic raw materials with application to the most diverse sectors of activity.

Official distributor of the best equipment brands for the industry, AGI offers its customers a wide range of general and specific equipment solutions for the automotive industry, the medical industry, the packaging industry, and any other market that operates with plastic raw materials.



Construction Materials

Products for facade and indoor cladding in phenolic compounds, melamine HPL and polycarbonate, among other construction materials.

3D Printing

1st polymer distribution company in Portugal that markets equipment and filaments for 3D printing.



VENTILATED FACADES

for people who create **FUNDERMAX**®



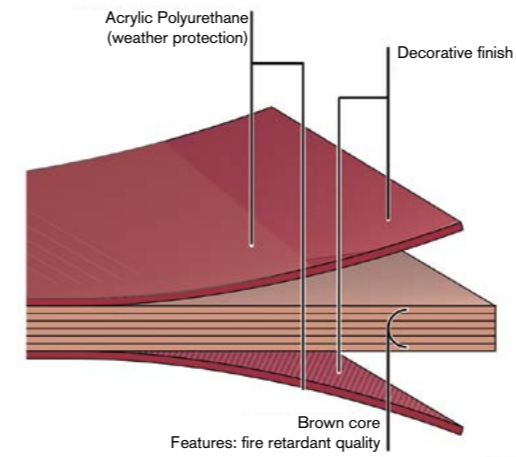
Max Exterior is a high-quality construction product that is especially used for durable outdoor cladding, balconies and facades. Max Exterior panels are thermostable compact products manufactured in accordance with EN 438-6, EDF type, high pressure (HPL), and using a resin specially developed with Fundermax technology, which offer a 10-year warranty of colour stability in class 4-5 according to the international grey scale.

for people who create **FUNDERMAX**

VENTILATED FACADES

Features:

- ▶ Most suitable for outdoor cladding
- ▶ Weather resistance according to EN ISO 4892-2
- ▶ Resistant to light according to EN ISO 4892-3
- ▶ Doubly hardened
- ▶ Scratch resistance
- ▶ Solvent resistance
- ▶ Hail resistance
- ▶ Easy to clean.
- ▶ Resistant to impacts according to EN ISO 17
- ▶ Decorative
- ▶ Self-supporting
- ▶ Bending behaviour according to EN ISO 178
- ▶ Heat and cold resistance, -80°C to 180°C (DMTA OFI-300.128)
- ▶ Easy assembly



Colour Range: Metallic, Colours, Nature, Material, Authentic
 Finishes: NT, NG, NH, NY
 Certifications: PEFC and FSC
 Sizes: 2800x1300mm; 4100x1300mm; 2800x1854mm; 4100x1854mm

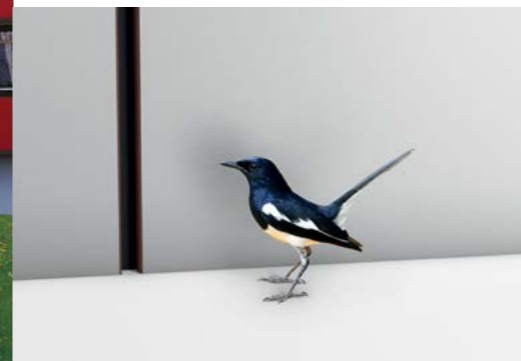


NY – Rough effect with shiny and matte reflections. Embossed texture.

NT – Silky matte effect with a subtle embossed finish.

NG – High quality shiny effect that enhances any decoration.

NH – Special anti-slip textured surface.



Digital printing

FUNDERMAX phenolic panels allow complete customization of your facades. Turn your idea into large format panels and give character to your buildings with exclusive designs. Create buildings with a special optical effect and image.

ALUMINIUM COMPOSITE



Product categories

ALBOND 9000
Outdoor claddings
(Pvdf 4mm - 0.5/0.5 alu)

20-year Warranty

ALBOND 5000
Signage
(Polyester 3mm - 0.3/0.3 alu)

5-year Warranty



ALBOND aluminium composite panels are manufactured with two aluminium sheets painted in the coil coating process and glued to both sides of a polyethylene core or mineral core.



Dimensions: Standard widths: 1000, 1250, 1500 and 2000mm;
Maximum length: 6400mm.

Thicknesses: 2 - 6mm.

UV resistance: High resistance to UV with PVDF coating system.
Range of resistance: -50°C/+ 80°C.

Thermal expansion coefficient: 0.024 mm/m/°C.

Sound insulation: 25 dB.

Fire classification: B (Bs1d0)/A2 (A2s1d0).



Advantages of ALBOND aluminium composite panels

- ▶ Freedom to choose your design
- ▶ Wide-ranging colours, effects and finishes
- ▶ Flexible, and easy to manipulate and mechanize
- ▶ Easy to install
- ▶ Rigid and very flat
- ▶ Light and thinner than other facade materials
- ▶ Easy to transport and ship
- ▶ Reliable in earthquakes
- ▶ Covering facade defects
- ▶ Easy to clean
- ▶ Environmentally friendly
- ▶ Fully recyclable
- ▶ Long durability



Aluminium composite is ideal for outdoor cladding

All types of buildings:

Shopping centres, offices, banks, hotels, gas stations, airports, train stations, football stadiums, etc.

VENTILATED FACADES IN POLYMER CONCRETE



Polymer concrete is a high quality material made up of a select combination of silica and quartz aggregates bound by polyester resins, thus creating a material with a resistance four times greater than conventional concrete.

Advantages:

- ▶ Non-porous product
- ▶ High tensile strength
- ▶ High shock resistance
- ▶ No water absorption
- ▶ High resistance to compression
- ▶ Resistant to industrial environments
- ▶ Durable over time



ARCHITECTURAL SOLUTIONS

Ventilated facades

It is a building cladding system that combines aesthetic characteristics with effective advantages in terms of thermal and sound insulation.

ULMA ventilated facade is a safe, light and aesthetic system that meets all the requirements of environmental sustainability. Ideal both for new buildings and for restoration.



INDOOR CLADDINGS



Indoor phenolic

Since 1954, ARPA Industriale has been designing and manufacturing high-quality HPL panels with the most advanced technology for various architectural and indoor design applications in sectors such as healthcare, shipbuilding, transportation, commercial furniture and kitchens. ARPA offers a wide and diverse range both in quality and thickness, design and finishes.



Decorative laminates

0,8mm/0,9mm/1mm

AGI has a selection of the most attractive colours and the most surprising textures to create Arpa for Kitchen Collection, available for immediate delivery with more than 35 colours (size 3050x1300mm) and thicknesses of 0.8mm/0.9mm/1mm or in 19mm sandwich panel.

HPL compacts

10mm/12,7mm

AGI makes available for immediate delivery¹ a wide collection of 10 and 12.7mm thick phenolic compacts, in 4300x1850mm panels and black core.

¹Except sale or stock breakage.



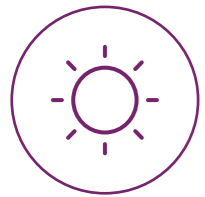
FEATURES



Impact resistance



Scratch, wear and abrasion resistance



Low light reflectivity



Easy to clean



Resistant to temperature



Hygienic



Suitable for food preparation areas



HPL NANOTECHNOLOGY

FENIX NTM[®] is a super matte nanotechnology material and an innovative product for indoor design, created by Arpa Industriale, which combines aesthetically elegant solutions with the most advanced technological performance. It is produced with state-of-the-art resins that offer this material new properties, expanding creativity in indoor design.

With low light reflectance, its surface is extremely matte, anti-fingerprints and very soft to the touch. Thanks to the use of nanotechnology, FENIX NTM[®] allows the repair of surface micro-scratches by the action of heat.



Minimum light reflectance, extremely matte surface



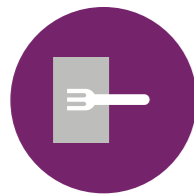
Thermal repair of surface micro-scratches



Soft to the touch



Anti-fingerprints



Scratch and abrasion resistance



Dry heat resistance



High resistance to acidic solvents and household reagents



Reinforced anti-bacteria property



FENIX NTM®

HPL NANOTECHNOLOGY

Sizes: 4200x1600mm; 3050x1300mm

Thicknesses: 0.9mm; 1.2mm; 10mm; 12mm

Applications: kitchens, bathrooms, furniture, health centres, hotel business, offices, elevators, doors

FENIX NTM® is highly resistant to scratches, abrasion, rubbing and dry heat. High resistance to shocks, acid solvents and household reagents. It has a high capacity to decrease the bacterial load, which makes its surface very hygienic and easy to clean. It is also waterproof and anti-mould.

Thanks to its special characteristics, FENIX NTM® can be used in both horizontal and vertical applications and in multiple typical solutions for indoor design in residential or commercial settings; from a kitchen to a bathroom, as a material for countertops, or to cover both the closet and house doors, as well as the walls. In the hotel or sanitary sector, for anti-splash walls, or in furniture elements such as tables, bookcases, chairs and partition walls.



FENIX NTM® is not only a functional material that meets a large number of daily needs, but also provides a new language that reveals its unique identity. The stylistic choice for this material that has an evocative surface is inspired by nature: cold or warm white of the winter landscape, intense greys of calm waters, or pearl white of the thunderous avalanches, magnolia and beige that capture the essence of the earth, blue like the illuminated sky and black from the storm sky.



TRANSLUCENT FACADES AND COVERINGS

LEXAN™ multiwall polycarbonate panels

- ▶ Thermoclear™ 2 UV
- ▶ Thermoclick™

Compact polycarbonate sheets

- ▶ LEXAN™ Exell™ D – Exterior

PC/ABS sheets

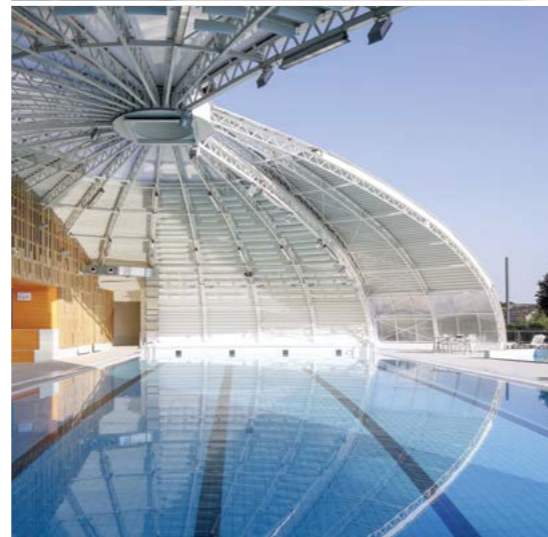
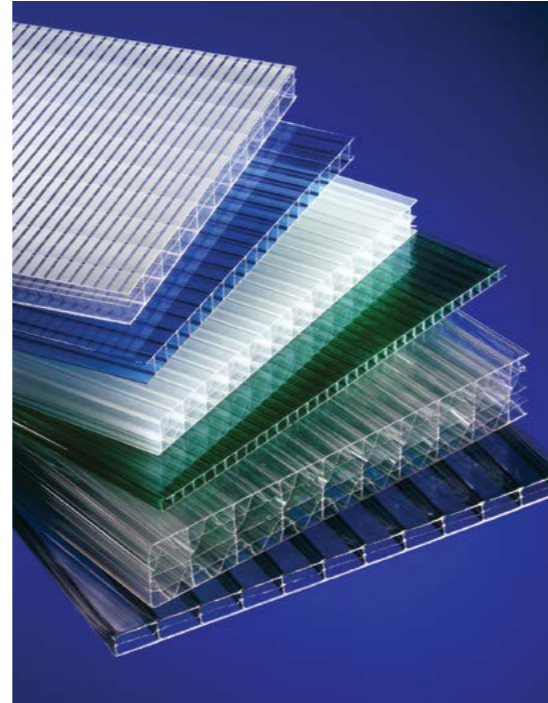
- ▶ LEXAN™ Cliniwall™

LEXAN™ cellular polycarbonate

LEXAN™ Thermoclear™ 2UV

Cellular panels formed by several walls, with exclusive protection against UV rays on both sides. This feature allows a better performance of the panels in vertical applications whose surfaces are exposed to sunlight on both sides, and also to avoid frequent errors in the installation of the protected surface to the outside. Likewise, a substantial improvement is obtained in the use of the cuts of triangular pieces.

- ▶ Exclusive UV protection on both sides across the whole range
- ▶ 10-year warranty (loss of light transmission of only 2%; check parameters)
- ▶ Excellent light transmission
- ▶ Great impact resistance
- ▶ Fire behaviour: self-extinguishing
- ▶ Available thicknesses: 6, 8, 10, 16, 20, 25, 32, 40 mm



LEXAN™ Thermoclick™ LTC40/4X 4000

Ideal for the construction of continuous translucent facades without the need for vertical connection profiles, with fixing by means of specific perimeter profiles. Polycarbonate sheets 500mm wide, tongue and groove connection, 40mm thick, reinforced 5-wall structure with textured interior walls for a light diffusion effect. Thermal insulation with coefficients $k = 1,27\text{W/m}^2\text{K}$ and $K = 1\text{ W/m}^2\text{K}$. External face with UV protection and internal face with groove for intermediate point fixing by means of a specific anchor.

Main features:

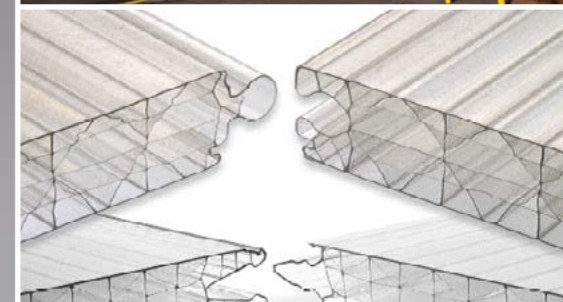
- ▶ Exclusive X structure
- ▶ Great stiffness
- ▶ Exterior surface with UV protection
- ▶ Good light transmission
- ▶ Light diffusion (diffusing interior walls)
- ▶ Excellent thermal insulation
- ▶ Comfort of use, degrees of IR solar control
- ▶ Great impact resistance
- ▶ Long-term weather resistance
- ▶ 10-year warranty
- ▶ Quick and easy installation

Available colours:

- ▶ Clear
- ▶ Opal white

On request:

- ▶ Yellow
- ▶ Orange
- ▶ Red
- ▶ Purple
- ▶ Blue
- ▶ Green
- ▶ Solar control I.R. (green tonality)



TRANSLUCENT FACADES AND COVERINGS

Solid polycarbonate panel for wall cladding

LEXAN™ Cliniwall™

- ▶ Opaque PC/ABS halogen-free panel
- ▶ Anti-bacterial properties
- ▶ Excellent chemical resistance, including blood and urine stains
- ▶ Easy to clean and disinfect
- ▶ Impact and scratch resistance
- ▶ Easy to shape and install
- ▶ Resistant to fire and low Bs1d0 smoke emission
- ▶ High durability

Compact polycarbonate sheets

LEXAN™ Exell™ D – Exterior

- ▶ Compact polycarbonate panels with UV protection on both sides
- ▶ Remarkable impact resistance (unbreakable)
- ▶ Security applications
- ▶ Optical quality
- ▶ Light transmission
- ▶ Low weight (compared to glass)
- ▶ Good behaviour against fire
- ▶ Both curved and flat applications
- ▶ 10-year warranty
- ▶ Available in: 3, 4, 5, 6, 7, 8, 9.5 and 12mm

Available colours:

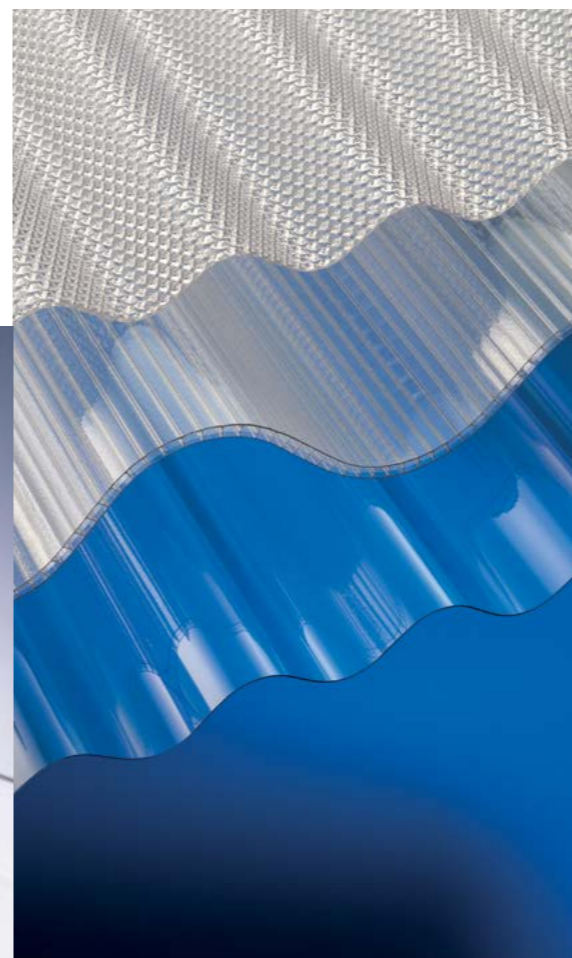
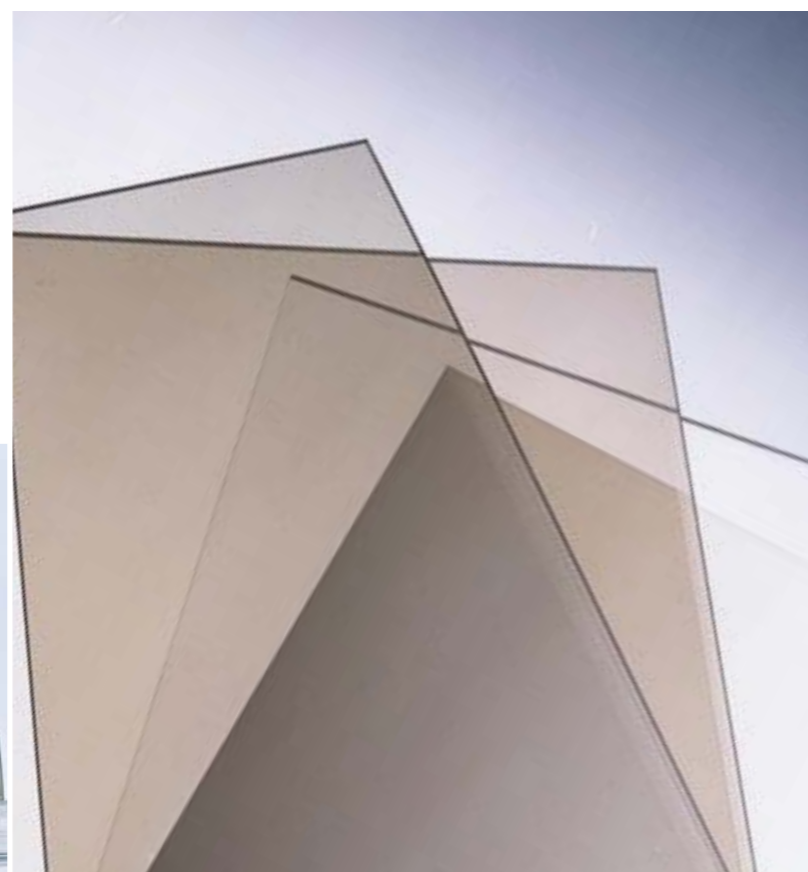
- ▶ Transparent
- ▶ Opal white
- ▶ Bronze

Corrugated/profiled polycarbonate sheets

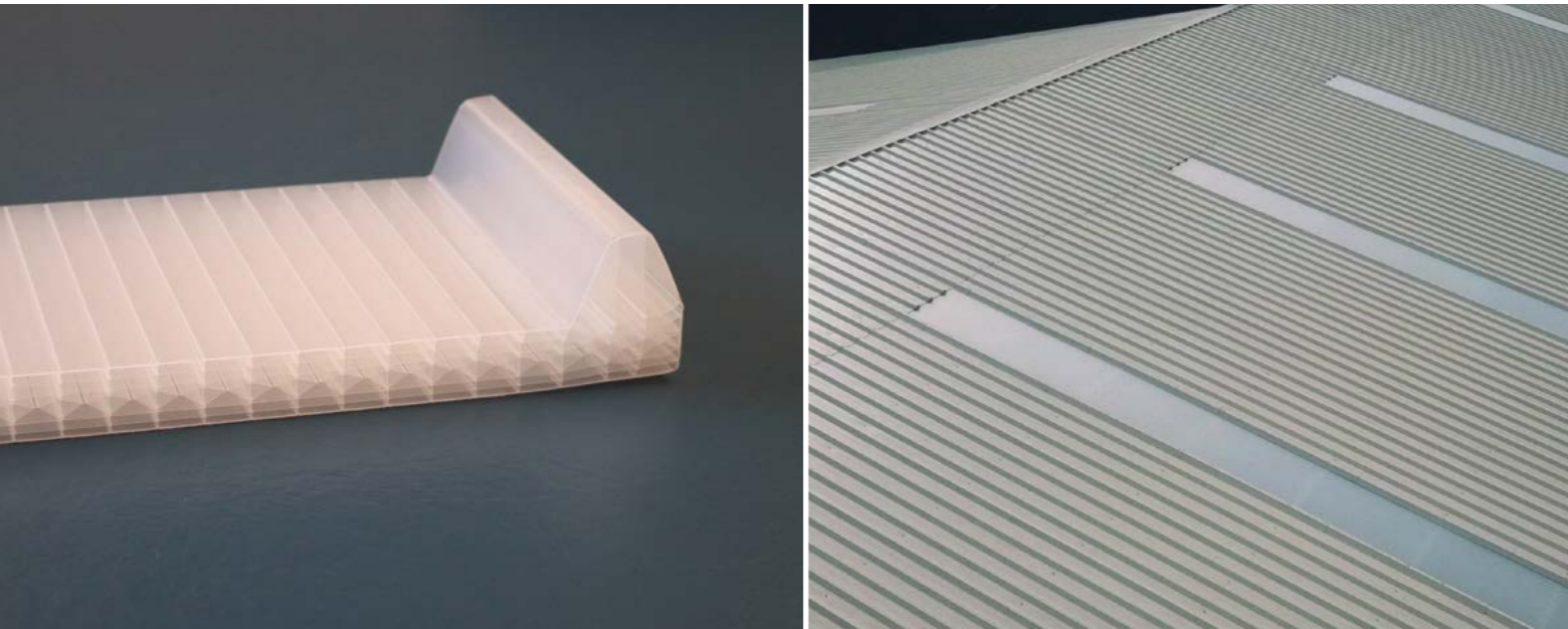
Marlon CS:

Corrugated/profiled polycarbonate sheets with UV protection for applications on industrial coverings with metal profiled sheet.

- ▶ Profiles upon request
- ▶ Lightweight
- ▶ Impact resistance
- ▶ UV protection on the outer side
- ▶ High light transmission
- ▶ Good behaviour against fire
- ▶ 10-year warranty



TRANSLUCENT FACADES AND COVERINGS



Translucent facades - LBE

System of multiwall panels with tongue and groove connection for large translucent continuous facades.

The LBE range can be produced * in various thicknesses depending on the mechanical and/or thermal insulation requirements.

Thicknesses: 40, 50 and 60mm

Accessories: Wide range of accessories, including window system.

Colors: Wide range of colors, gloss finish, frost, pastel, and custom color development versatility.

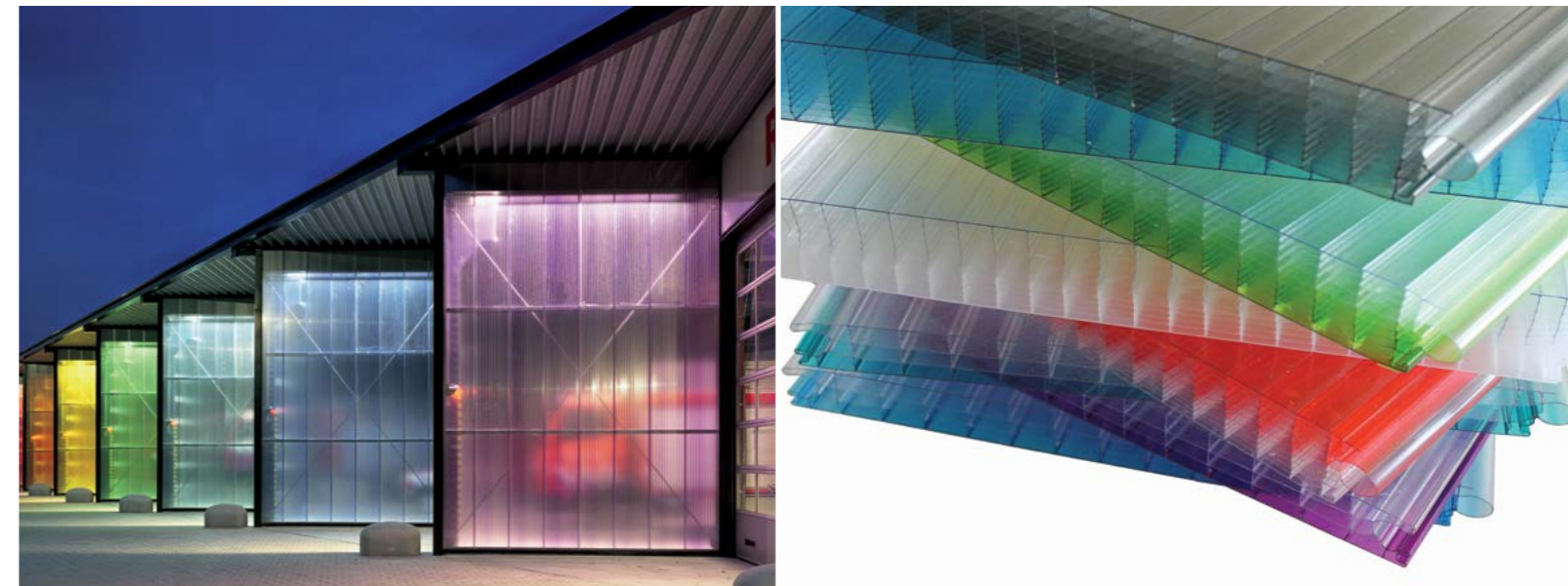
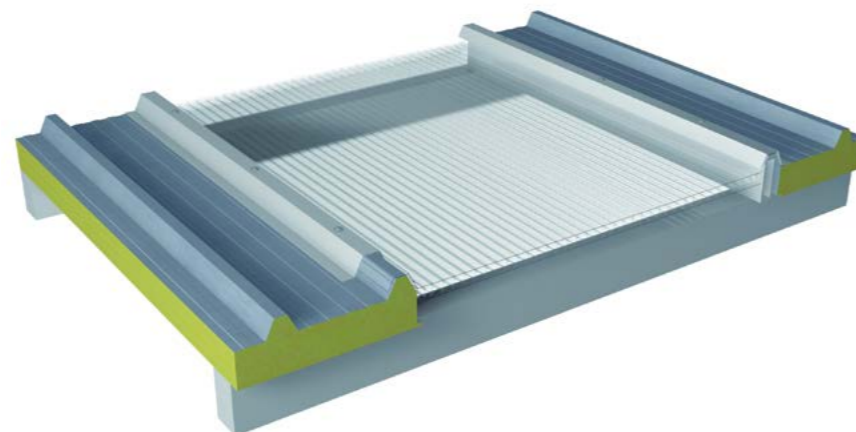
Chromatic combinations in the Bi-Color, Duocolor and Decocolor ranges allows you to combine two colors in one panel providing design freedom and optimization of ambient light filtering for comfort of use.

PLP 1000-30 Thermopanel

Multiwall reinforced panels, geometrically suitable to be used with sandwich metal panels for industrial roofs, or in translucent continuous roofs.

PLP 1000-30 panels with lateral trapeze geometry reinforced with multiwall layers, avoid traditional need to use an accessory to reinforce the overlapping area with polyurethane sandwich.

High mechanical resistance, UV protection on the outside, fire rating B-s1-d0. Available from stock in 30mm, color White Opal and in large dimensions.



* Minimum quantities on request according to thickness and color range.

CUSTOM FACADES AND COVERINGS

Easy to install and without perforations

The Elysium smart roof is a patented metal roof system with pressure fitting, produced as it can be successfully installed on flat and inclined surfaces in industrial, commercial and residential buildings.

Elysium is a versatile and easy to install system. The locking system was developed to close and join the trays without the need for specific equipment, so there is no need to drill and install support clips.

This system is available in different metals and colors, in order to provide a high level of customisation, allowing to identify the most appropriate solution for the different types of industrial, commercial and residential buildings.

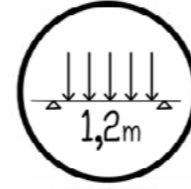
- ▶ Easy and quick installation;
- ▶ Direct fixing to the support without support clips;
- ▶ Self-supporting/passable (supports at 1200mm);
- ▶ Waterproof on reduced slopes (Elysium Plus);
- ▶ Range of finishes and colors;
- ▶ Personalization



Features



No perforations



Structural tray



Quick and easy assembly



Waterproof safety



Roll forming machine



Endless length



Easy replacement

eLYSIUM
COVERING WITHOUT HOLES





AGI-Augusto Guimarães & Irmão, Lda. is a distribution company with more than 105 years of experience in the Portuguese market. The company distributes the most important brands of polymers and equipment for the plastic manufacturing industry.

In response to the needs of the Portuguese market, in 1992, AGI expanded its area of activity to the construction sector, offering a wide range of materials for indoor and outdoor use. Having a solid relationship with the leading brands in the sector, AGI presents architects and construction project managers, as well as innovative and high-quality solutions, ensuring greater sustainability, aesthetics and durability of their projects.

Our development is based on the satisfaction of our clients, who ensure the competitiveness of their projects thanks to the quality of our products and the dedication and professionalism of a great team.



**WE ENSURE
COMPETITIVENESS**

AGI-Augusto Guimarães & Irmão, Lda.
PO Box 100, 4406-901 Vila Nova de Gaia, Portugal

